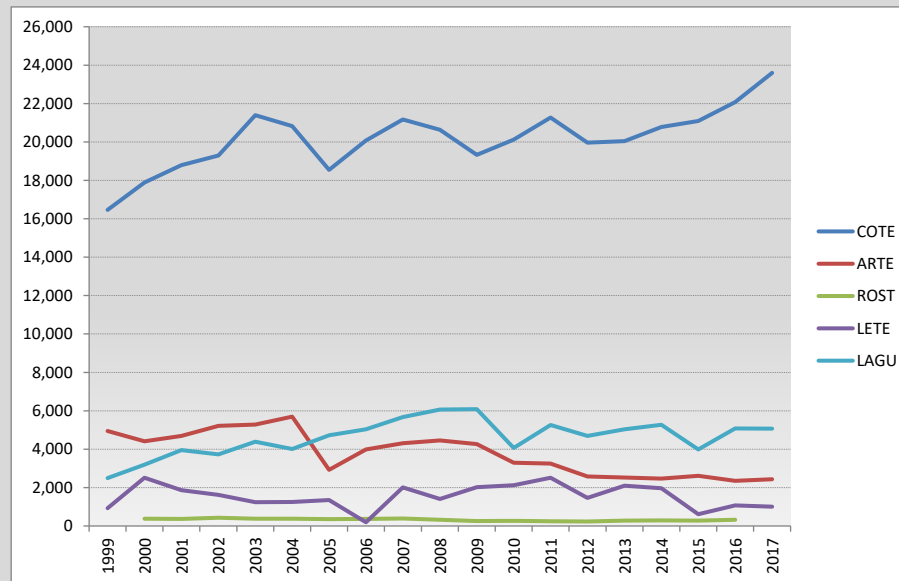


UPPER CAPE														
N. Sandwich Area													MAS	
East Sandwich Beach													MAS	
Town Neck Beach													MAS	
Springhill Beach													MAS	
Scorton Creek, Sandwich													MAS	
Scorton Shores													MAS	
Dowses Beach, Barnstable													Barnstable	
Craigville-Long Beach, Barnstable													MAS	
Squaw I., Barnstable													MAS	
Dunbar Pt, Barnstable													Barnstable	
Seagull Beach													MAS	
Great I, Yarmouth													MAS	
Sandy Neck, Barnstable													Barnstable, MAS	
Gray's Beach, Yarmouth													MAS	
West Dennis Beach, Dennis													MAS	
Miramar Beach (Dennis Port?)														
Washburn I, Falmouth													WBNERR/DCR	
Menauhant, East Falmouth													MAS	
South Cape Beach-Waquoit, Mashpee													WBNERR/DCR	
Popponeset Island Spit, Mashpee													MAS	
Dead Neck-Sampson I, Barnstable													MAS	
LOWER CAPE														
Ridgevale Beach (west of Monomoy)													MAS	
-Orleans (Chatham line N to Nauset Harbor Inlet)													Orleans	
Nauset-Chatham (incl. S. Beach I.)													MAS, MDFW	
Tern I, Chatham													MAS	
Harding's Beach and Point, Chatham													MAS	
Nauset, New Island - Orleans													NPS	
S. Sunken Meadow, Eastham													MAS	
Lieutenant Island													MAS	
Nauset-Eastham (CG Beach & Plover I.)													NPS	
Marconi Beach, Wellfleet													NPS	
Pamet Harbor Bar, Truro													MAS	
Cahoon Hollow, Wellfleet													NPS	
Great I. - Jeremy Pt, Wellfleet.													NPS	
Wood End-Long Pt., Provincetown													NPS	
Race Pt Light Area, Provincetown													NPS	
Race Pt CG Stat., Provincetown													NPS	
Mission Bell, Provincetown														
Ballston Beach, Truro													NPS	
Tasha's Area, Provincetown														
Beach Pt., Pilgrim Beach, Provincetown													MAS	
High Head, Truro													NPS	
North Monomoy			0	0	0								Kate Iaquinto	
Minimoy			0	0	0								Kate Iaquinto	
South Monomoy	6/7, 6/8, 6/10	N	11723				1.45	352	0.81	2	2.31	352	0.66	Kate Iaquinto
South Monomoy	6/1-6/20	N			11		0.82	11	0.87	3	1.8	10	0.63	Kate Iaquinto
South Monomoy	6/16	NP				751	Good							Kate Iaquinto
South Monomoy	6/17,6/8, 6/10	N				2714	Poor							Kate Iaquinto
NORTH SHORE (GOM only)														
SOUTH SHORE(GOM only)														
UPPER CAPE (GOM only)														
LOWER CAPE (GOM only)			11,723	-	11	751	2,714							
Bird Island* (Buzzards Bay)														
Ram Island* (Buzzards Bay)														
Penikese Island* (Buzzards Bay)														
2017 MASSACHUSETTS Totals (GOM only)			11,723	0	11	751	2,714							
2016 MASSACHUSETTS Totals (GOM only)			10,505	0	12	839	2,738							

2015 MASSACHUSETTS Totals (GOM only)		9,207	0	11	532	1,424
2014 MASSACHUSETTS Totals (GOM only)		9,636	0	8	1,713	2,089
2013 MASSACHUSETTS Totals (GOM only)		9,104	0	8	1,872	1,863
2012 MASSACHUSETTS Totals (GOM only)		9,200	0	8	1,268	1,253
2011 MASSACHUSETTS Totals (GOM only)		10,147	0	12	2,438	1,581
2010 MASSACHUSETTS Totals (GOM only)		9,413	2	9	1,892	1,249
2009 MASSACHUSETTS Totals (GOM only)		8,862	4	0	1,846	1,618
2008 MASSACHUSETTS Totals		10,690	2	31	1,242	1,582
2007 MASSACHUSETTS Totals		10,740	1	45	1,853	1,498

	Year	COTE	ARTE	ROST	LETE	LAGU
2017 GULF OF MAINE TOTALS	2017	23,598	2,435	348	1,004	5,074
2016 GULF OF MAINE TOTALS	2016	22,072	2,351	323	1,077	5,080
2015 GULF OF MAINE TOTALS	2015	21,088	2,608	279	613	3,987
2014 GULF OF MAINE TOTALS	2014	20,783	2,464	295	1,962	5,272
2013 GULF OF MAINE TOTALS	2013	20,047	2,525	282	2,096	5,040
2012 GULF OF MAINE TOTALS	2012	19,965	2,580	233	1,460	4,686
2011 GULF OF MAINE TOTALS	2011	21,266	3,247	243	2,513	5,256
2010 GULF OF MAINE TOTALS	2010	20,125	3,293	265	2,123	4,069
2009 GULF OF MAINE TOTALS	2009	19,331	4,265	260	2,022	6,085
2008 GULF OF MAINE TOTALS	2008	20,630	4,450	326	1,404	6,059
2007 GULF OF MAINE TOTALS	2007	21,176	4,306	391	2,011	5,669
2006 GULF OF MAINE TOTALS	2006	20,076	3,991	371	193	5,033
2005 GULF OF MAINE TOTALS	2005	18,543	2,921	354	1,351	4,726
2004 GULF OF MAINE TOTALS	2004	20,829	5,694	379	1,256	4,013
2003 GULF OF MAINE TOTALS	2003	21,397	5,287	381	1,244	4,389
2002 GULF OF MAINE TOTALS	2002	19,298	5,217	429	1,622	3,733
2001 GULF OF MAINE TOTALS	2001	18,788	4,687	365	1,860	3,953
2000 GULF OF MAINE TOTALS	2000	17,886	4,407	377	2,513	3,196
1999 GULF OF MAINE TOTALS	1999	16,462	4,946	307	931	2,494



Methods: N=nest count, NE=partial nest count & extrapolation NP=nesting pairs (visual estimate), VE=individual birds (visual estimate from island), VEB=individual birds (estimate from boat)

Productivity Methods: 1=feeding study, 2=fenced plot, 3=unfenced plot

Note: Productivity is expressed as the number of fledglings/nest, N=sample size, SD=standard deviation, 15-day old COTE and ARTE chicks are considered fledglings, study chicks found dead after fledge date are subtracted from productivity estimate. ROST chicks were considered fledged based on survival to 10 days and weights during the first few days of life.